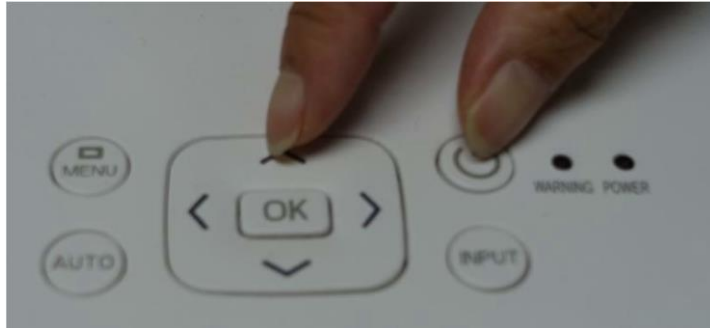


□ **Setup projector in F/W downloading mode**

(If you continue from “Update Projector EK-100&300 FW SOP1 preparation.pdf”, you can pass the steps 1 through 4.)

1. Press [Power] + [UP] simultaneously



2. Plug-in power code



3. Keep press [power + up] button until warning LED in steady light and power LED in flashing light

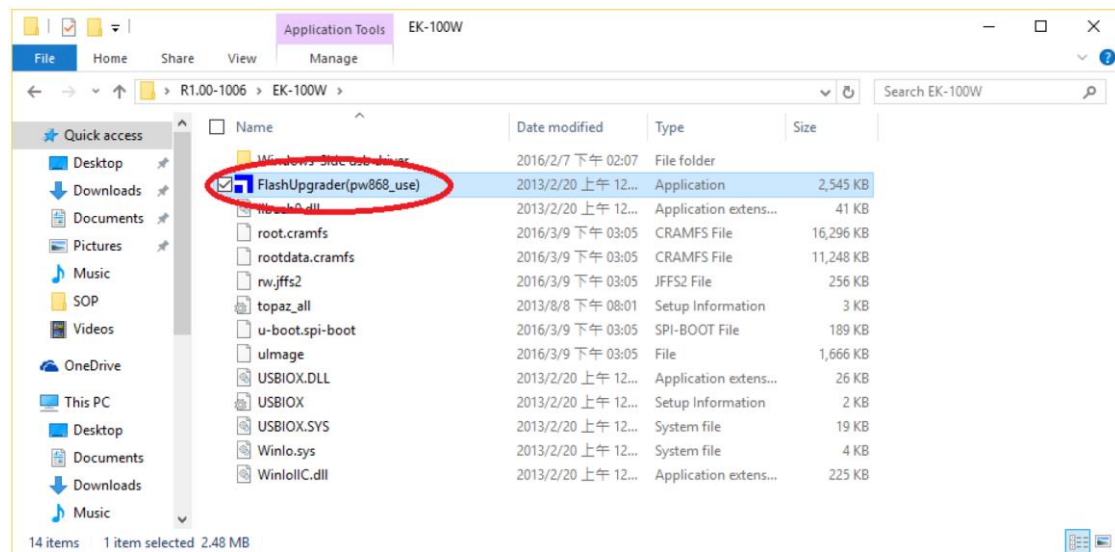


4. Connect a USB Type A – B cable to desktop/laptop

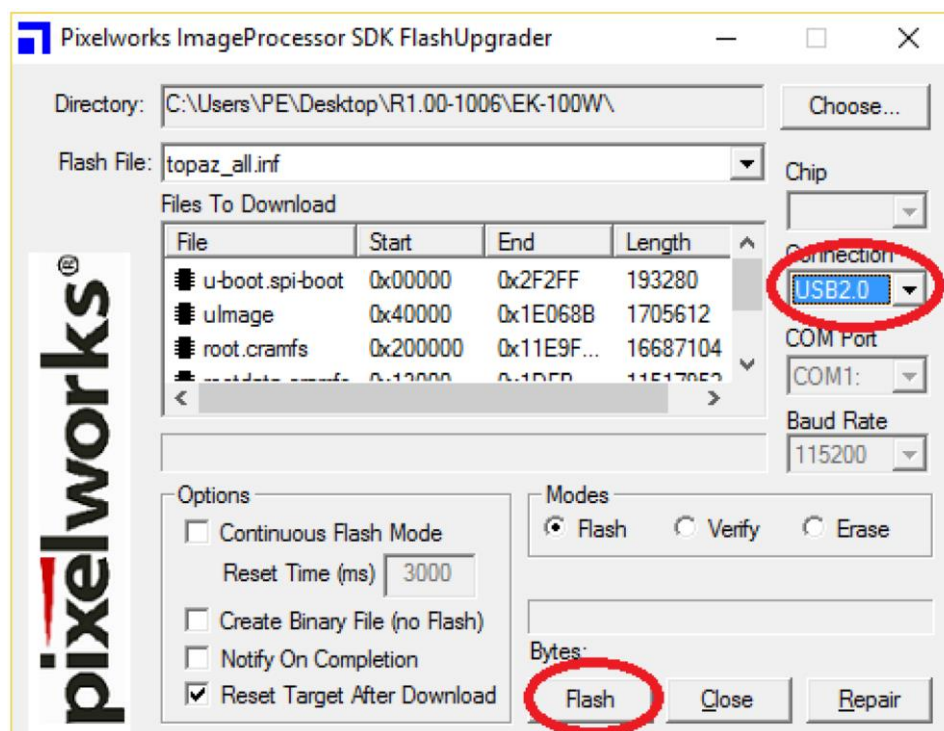


□ Start updating F/W

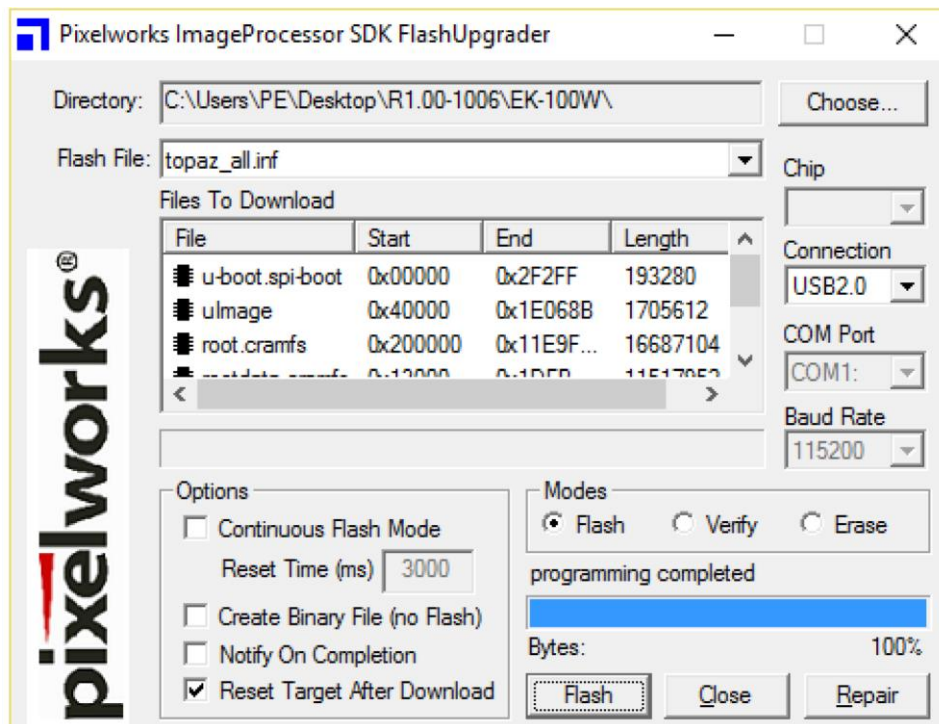
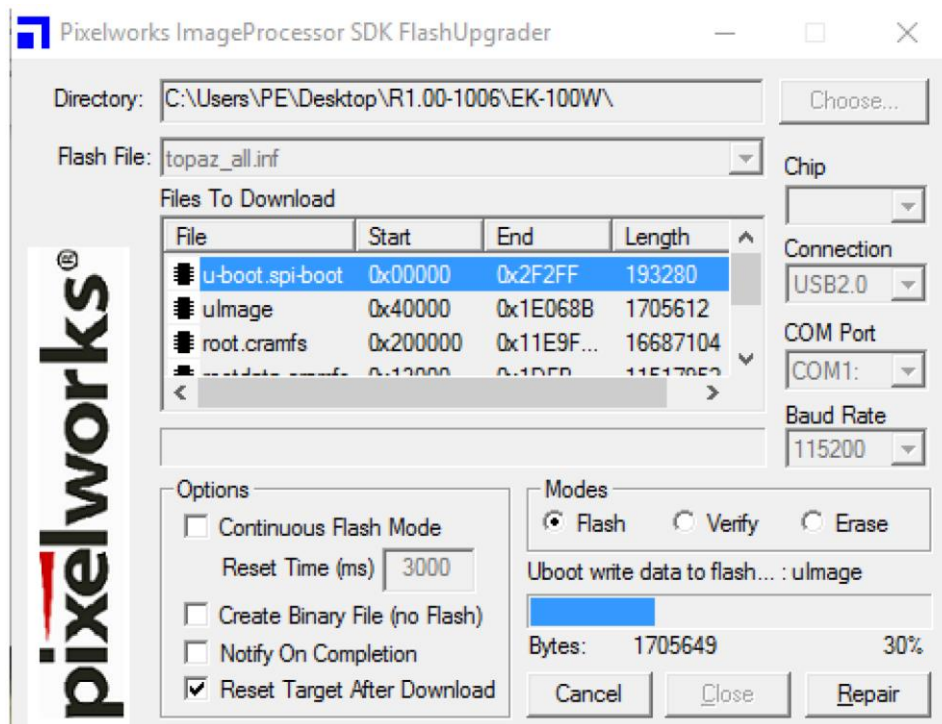
5. Launch FlashUpgrader(pw868\_use) from folder



6. Select USB2.0 and press Flash



7. It will start to upgrade and just wait a few minutes  
Projector will turn on after updating finished.



8. Unplug USB
9. Done.